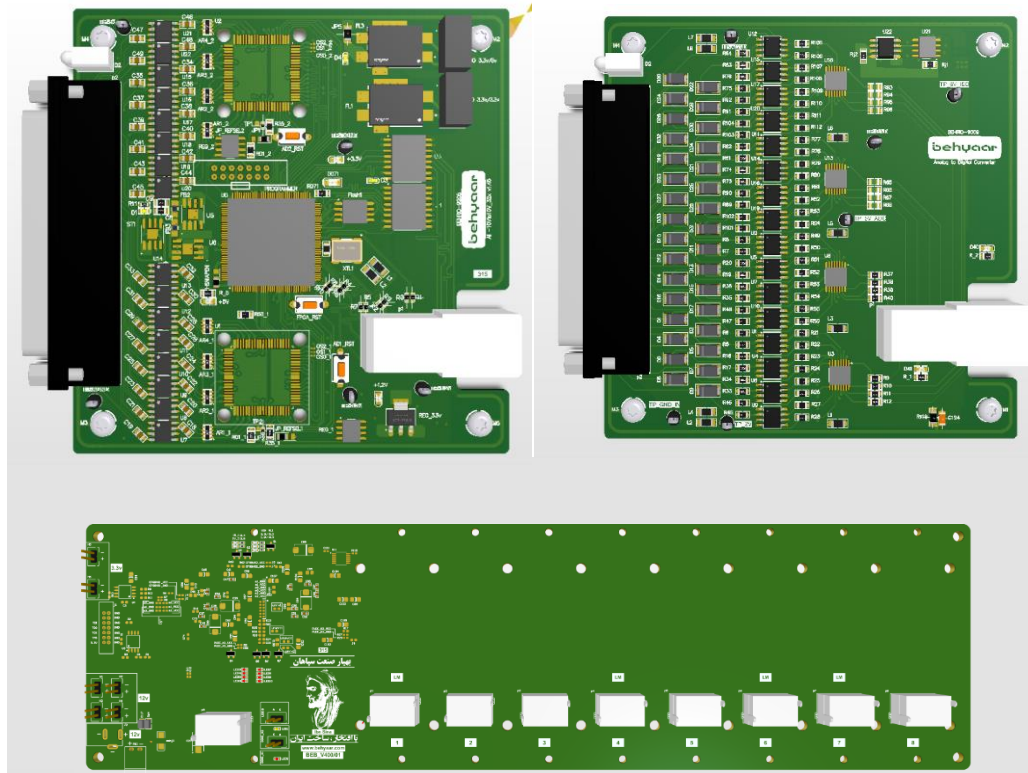
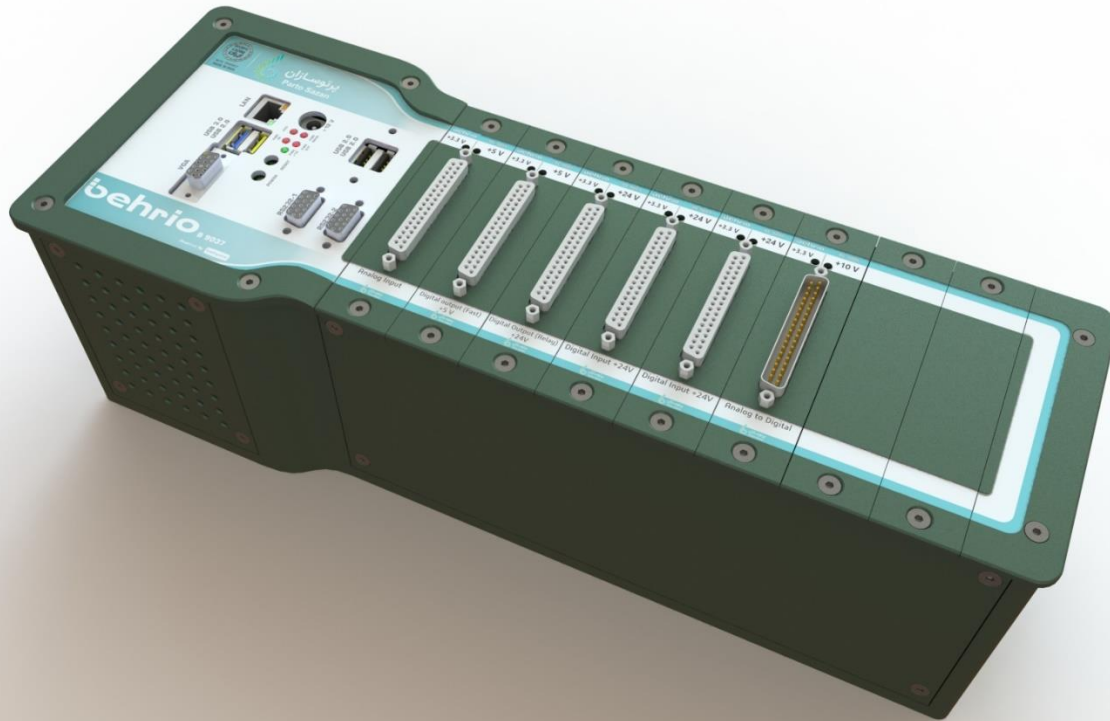




## بردهای کنترلی و پردازشی

برد پردازشی BehRIO-9037 مبتنی بر (CPU+FPGA (KINTEX7



The BehRIO-9037 is a rugged, fanless, embedded controller that you can use for advanced control and monitoring applications. This software-designed controller features an FPGA, a real-time processor running the NI Linux Real-Time OS, and embedded user interface capability.