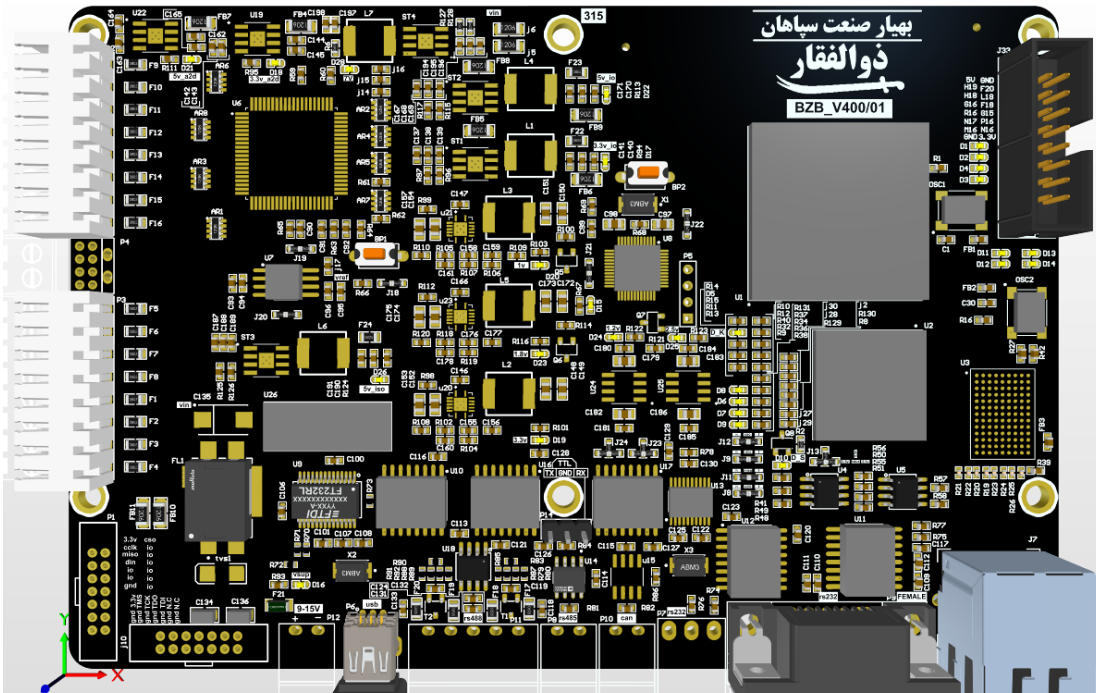




بردهای کنترلی و پردازشی

برد پردازشی BZ9627 مبتنی بر (FPGA (KINTEX7



The BZ9627 is an embedded controller that uses a user-reconfigurable FPGA, and I/O on a single printed circuit board (PCB). It includes a RIO Mezzanine Card (RMC) connector, which is a high-speed, high-bandwidth connector that provides direct access digital I/O FPGA lines. The BZ9627 is designed to be easily embedded in high-volume original equipment manufacturer (OEM) applications that require flexibility, reliability, and high performance. This controller features Gigabit Ethernet, CAN, USB, serial, and SDHC ports. The BZ9627 has sixteen 16-bit analog inputs, four 16-bit analog outputs, and 100 digital lines.